

PINEWOOD LAKE

A PARCEL OF LAND LYING IN THE NORTHEAST ONE-QUARTER, OF SECTION 10, TOWNSHIP 44 SOUTH, RANGE 42 EAST,
THE CITY OF GREENACRES, PALM BEACH COUNTY, FLORIDA.

THIS INSTRUMENT PREPARED BY:
GEORGE D. GIBSON, III, P.S.M.
STATE OF FLORIDA REGISTRATION NO. 5830
G3 SURVEY SOLUTIONS, INC.
LB-7173
18312 49TH STREET NORTH
LOXAHATCHEE, FLORIDA 33470

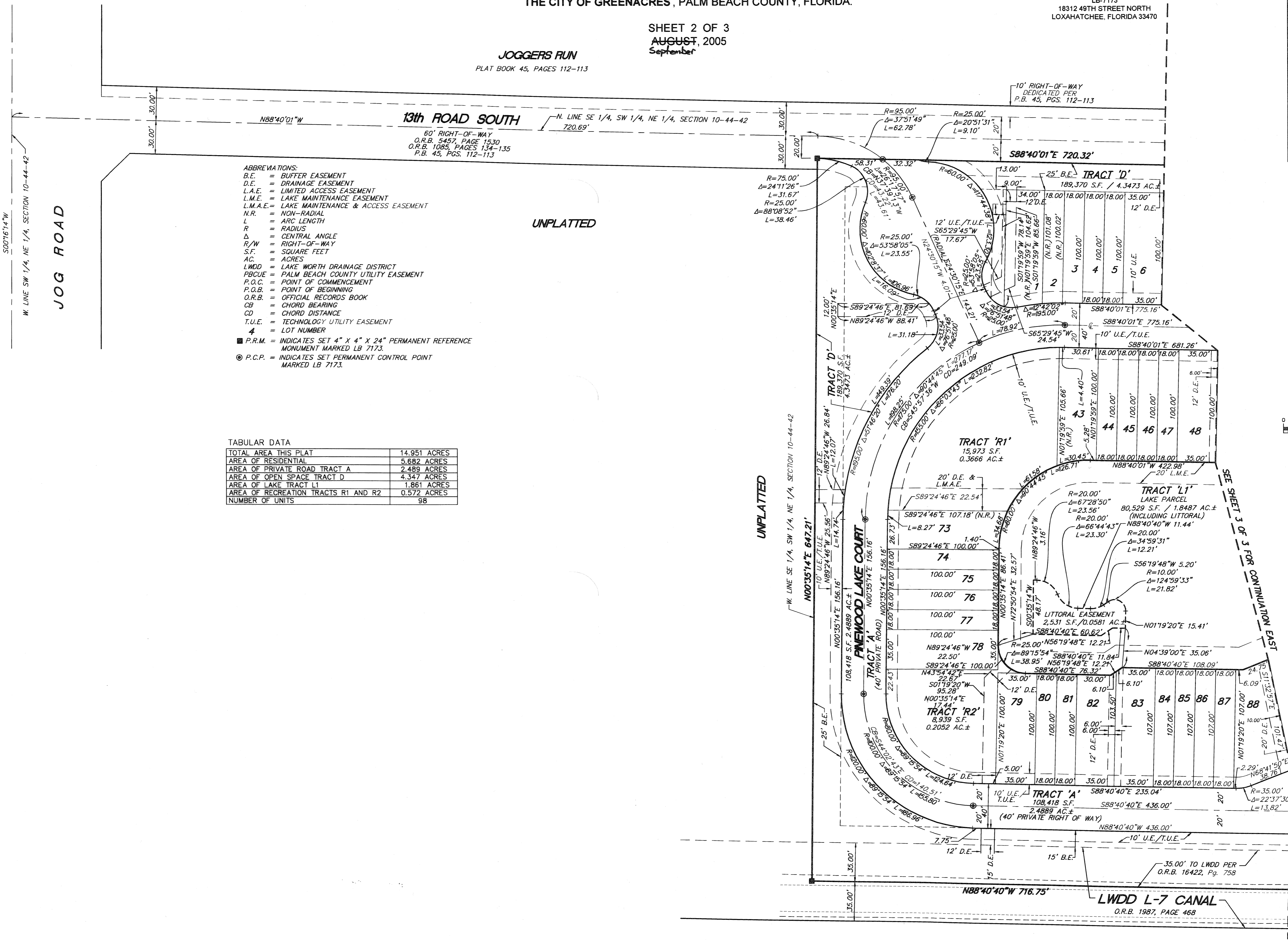
SHEET 2 OF 3
AUGUST, 2005
September

JOGGERS RUN
PLAT BOOK 45, PAGES 112-113

59

STATE OF FLORIDA
COUNTY OF PALM BEACH
THIS PLAT WAS FILED FOR
RECORD AT _____ M.
THIS _____ DAY OF _____
A.D. 2005 AND DULY RECORDED
IN PLAT BOOK _____ ON
PAGES _____ AND _____
SHARON R. BOCK
CLERK AND COMPTROLLER

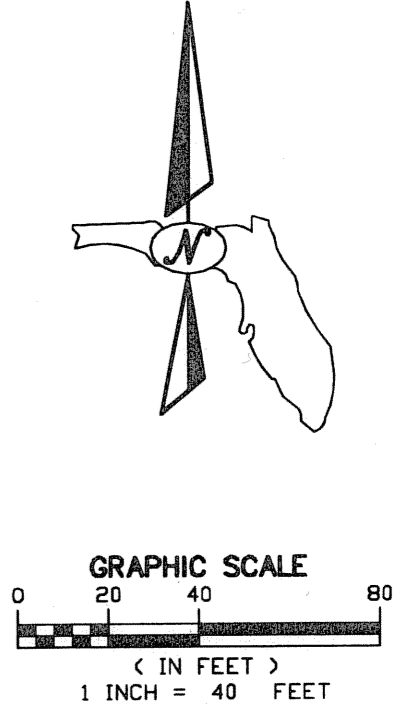
BY: _____
DEPUTY CLERK



- ABBREVIATIONS:
- B.E. = BUFFER EASEMENT
 - D.E. = DRAINAGE EASEMENT
 - L.A.E. = LIMITED ACCESS EASEMENT
 - L.M.E. = LAKE MAINTENANCE EASEMENT
 - L.M.A.E. = LAKE MAINTENANCE & ACCESS EASEMENT
 - N.R. = NON-RADIAL
 - L = ARC LENGTH
 - R = RADIUS
 - Δ = CENTRAL ANGLE
 - R/W = RIGHT-OF-WAY
 - S.F. = SQUARE FEET
 - AC. = ACRES
 - LWDD = LAKE WORTH DRAINAGE DISTRICT
 - PBCUE = PALM BEACH COUNTY UTILITY EASEMENT
 - P.O.C. = POINT OF COMMENCEMENT
 - P.O.B. = POINT OF BEGINNING
 - O.R.B. = OFFICIAL RECORDS BOOK
 - CB = CHORD BEARING
 - CD = CHORD DISTANCE
 - T.U.E. = TECHNOLOGY UTILITY EASEMENT
 - 4 = LOT NUMBER
- P.R.M. = INDICATES SET 4" X 4" X 24" PERMANENT REFERENCE MONUMENT MARKED LB 7173.
- P.C.P. = INDICATES SET PERMANENT CONTROL POINT MARKED LB 7173.

TABULAR DATA

TOTAL AREA THIS PLAT	14.951 ACRES
AREA OF RESIDENTIAL	5.682 ACRES
AREA OF PRIVATE ROAD TRACT A	2.489 ACRES
AREA OF OPEN SPACE TRACT D	4.347 ACRES
AREA OF LAKE TRACT L1	1.861 ACRES
AREA OF RECREATION TRACTS R1 AND R2	0.572 ACRES
NUMBER OF UNITS	98



S0071614"W
W. LINE SW 1/4, NE 1/4, SECTION 10-44-42

JOG ROAD

UNPLATTED

UNPLATTED

SEE SHEET 3 OF 3 FOR CONTINUATION EAST

10' RIGHT-OF-WAY
DEDICATED PER
P.B. 45, PGS. 112-113

TRACT 'D'
189,370 S.F. / 4.3473 AC.±

TRACT 'R1'
15,973 S.F.
0.3666 AC.±

TRACT 'L1'
LAKE PARCEL
80,529 S.F. / 1.8487 AC.±
(INCLUDING LITTORAL)

TRACT 'R2'
8,939 S.F.
0.2052 AC.±

TRACT 'A'
108,418 S.F.
2.4889 AC.±
(40' PRIVATE RIGHT OF WAY)

LWDD L-7 CANAL
O.R.B. 1987, PAGE 468

35.00' TO LWDD PER
O.R.B. 16422, Pg. 758